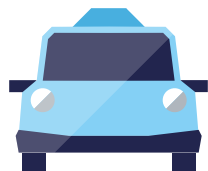


Taking A Rail Replacement Taxi



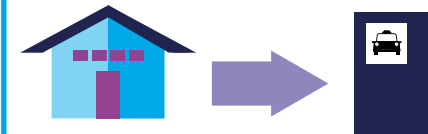
Sometimes I want to take a train ride, but the train is not able to take me where I want to go.



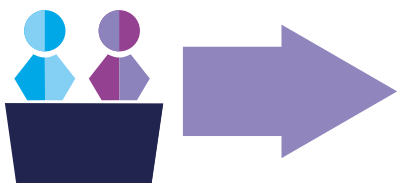
This means at times I might have to get a taxi instead. This is okay.



This will be arranged for me by staff who work at the train station.



I will go outside the train station to the taxi pickup point.



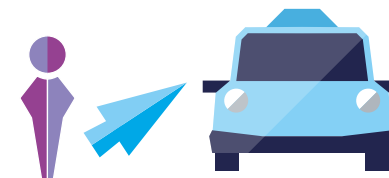
If the station has staff, they will show me where to wait for my taxi.



At times, there might not be any staff. I can use the help points instead.



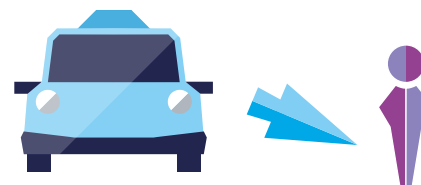
I do not need to pay for the taxi.



I will get in the taxi when it arrives.



Sometimes the taxi might take slightly longer to get me to where I wanted to go. This is okay.



I will get out of the taxi when I arrive at my destination.

It is okay to take the rail replacement taxi instead if the train cannot take me to my destination.